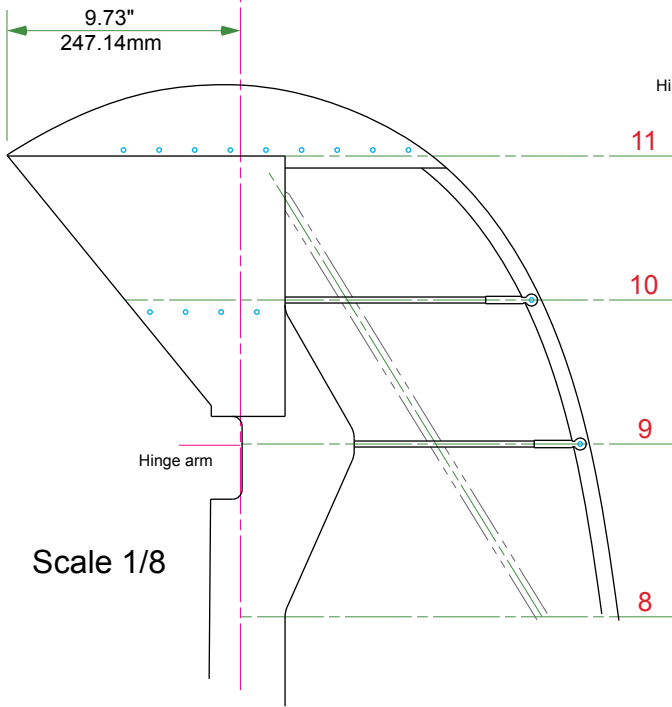


Elevator rib stations

- Fabric covered elevator
- Metal clad elevator

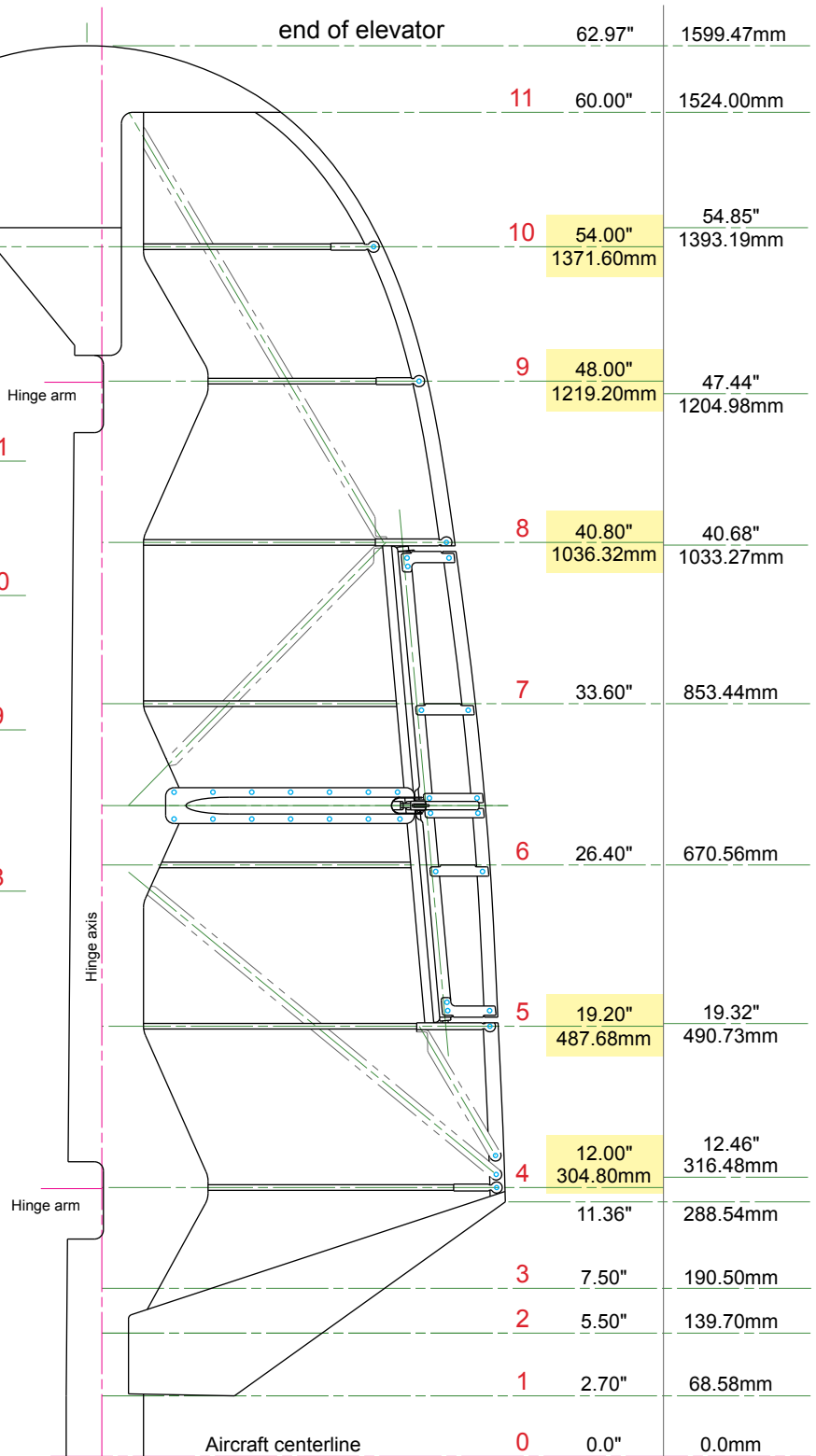


Scale 1/8

Elevator horn balance for Mk. V aircraft converted to Mk. IX. Early production.

This update applies to drawings printed up to December 2007. The rib station line centres for the fabric covered elevator were assigned the same stations as those for the metal clad elevator. This is incorrect. The fabric covered elevator has slightly different centerlines. Ribs 4,5,8,9,10 are effected.

The metal covered elevator found on Mk XVI drawings remain unchanged.



Scale 1/8
Starboard elevator shown
port elevator is opposite

Fabric covered	Metal clad
Mk IX	Mk XVI

Divide the dimension shown by the scale factor of your plan set to obtain the new scale dimension.